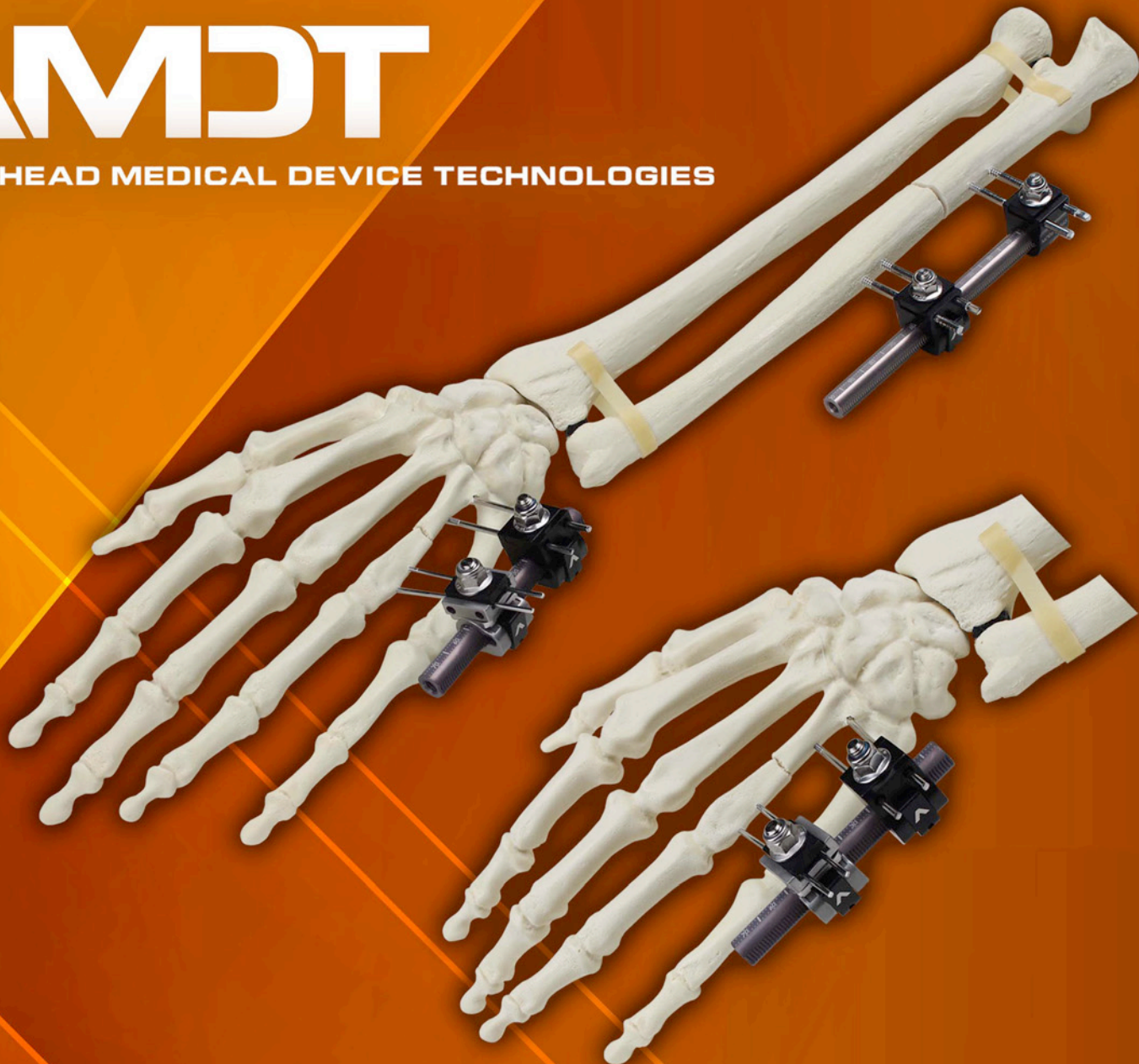


AMDT

ARROWHEAD MEDICAL DEVICE TECHNOLOGIES

Mini-Rail



Mini-Rail Fixator System

Versatility Of Function • Single System Adaptable For Diverse Anatomic Conditions

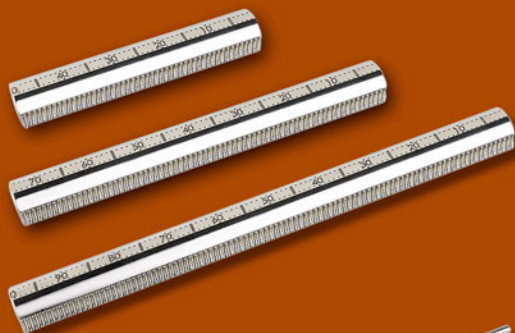
For More Information, Please Visit Amdtholdings.com



Mini-Rail Fixator System

The Mini-Rail Fixator is a unilateral external fixator that provides a stable solution for fractures, for lengthening of bones and for correcting deformities. The design provides advanced features to address complex cases yet also offers basic components for those cases that are less complicated or require a higher degree of affordability. The Mini-Rail is versatile yet always lightweight and low profile.

9mm Rails in Lengths of
50mm, 75mm, 100mm and 150mm

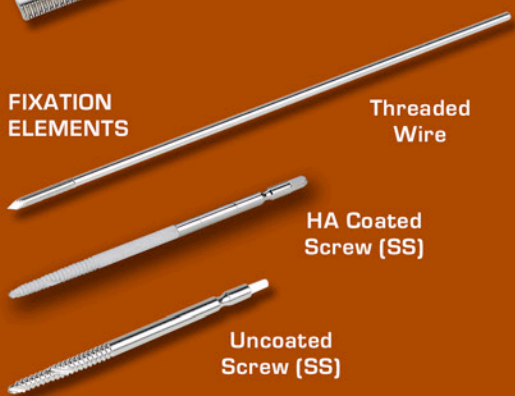


FIXATION
ELEMENTS

Threaded
Wire

HA Coated
Screw (SS)

Uncoated
Screw (SS)



Mini-Rail Clamps



Universal
Fixation Clamp
(Clutched)



Standard
Fixation Clamp
(Clutched)



Universal
End Clamp



Standard
End Clamp In-Line



Standard
End Clamp 90°

Universal Clamps offer 3 degrees of freedom and accept fixation elements from 1.0mm to 3.0mm in diameter. Standard Clamps accept fixation elements from 2.0mm to 3.0mm in diameter.



Multiple clamps moving independently or in unison can apply several points of compression and/or distraction along the same rail.



Rotating the Clamp Assembly 90° enables the Universal Clamps to accept screws or wires.



The Universal Clamp allows variable angle placement of the fixation elements.

UNIT # DESCRIPTION

M702	Traveling Clamp, Universal Clutched
M703	Traveling Clamp, Standard Clutched
M705	End Clamp, Universal
M706	End Clamp, Standard In-line
M707	End Clamp, Standard 90°
M711	Collet, 1.6mm
M712	Collet, 2.0mm
M713	Collet, 3.0mm
M708	Rail, 9mm x 50mm
M709	Rail, 9mm x 75mm
M710	Rail, 9mm x 100mm
M715	Rail, 9mm x 150mm
M732	Bone Screw, ø3.0mm X 60mm long, 20mm thread
M738	Bone Screw, ø3.0mm X 60mm long, 25mm thread
M745	Bone Screw, ø3.0mm X 80mm long, 25mm thread
M739	Bone Screw, ø3.0mm X 80mm long, 30mm thread
M734	Bone Screw, ø3.0mm X 100mm long, 20mm thread
M746	Bone Screw, ø3.0mm X 100mm long, 30mm thread
M747	Bone Screw, ø3.0mm X 100mm long, 40mm thread
ST025360HA	Bone Screw HA, ø3.0mm X 60mm long, 20mm thread
ST025380HA	Bone Screw HA, ø3.0mm X 80mm long, 20mm thread

ARROWHEAD MEDICAL DEVICE TECHNOLOGIES

AMDT

AMDT Holdings, Inc. • 328 Poplar View Lane East, Suite 2 • Collierville, TN 38017 • info@amdtholdings.com • (901) 853-4366

88-2002 REV 01 3/18